

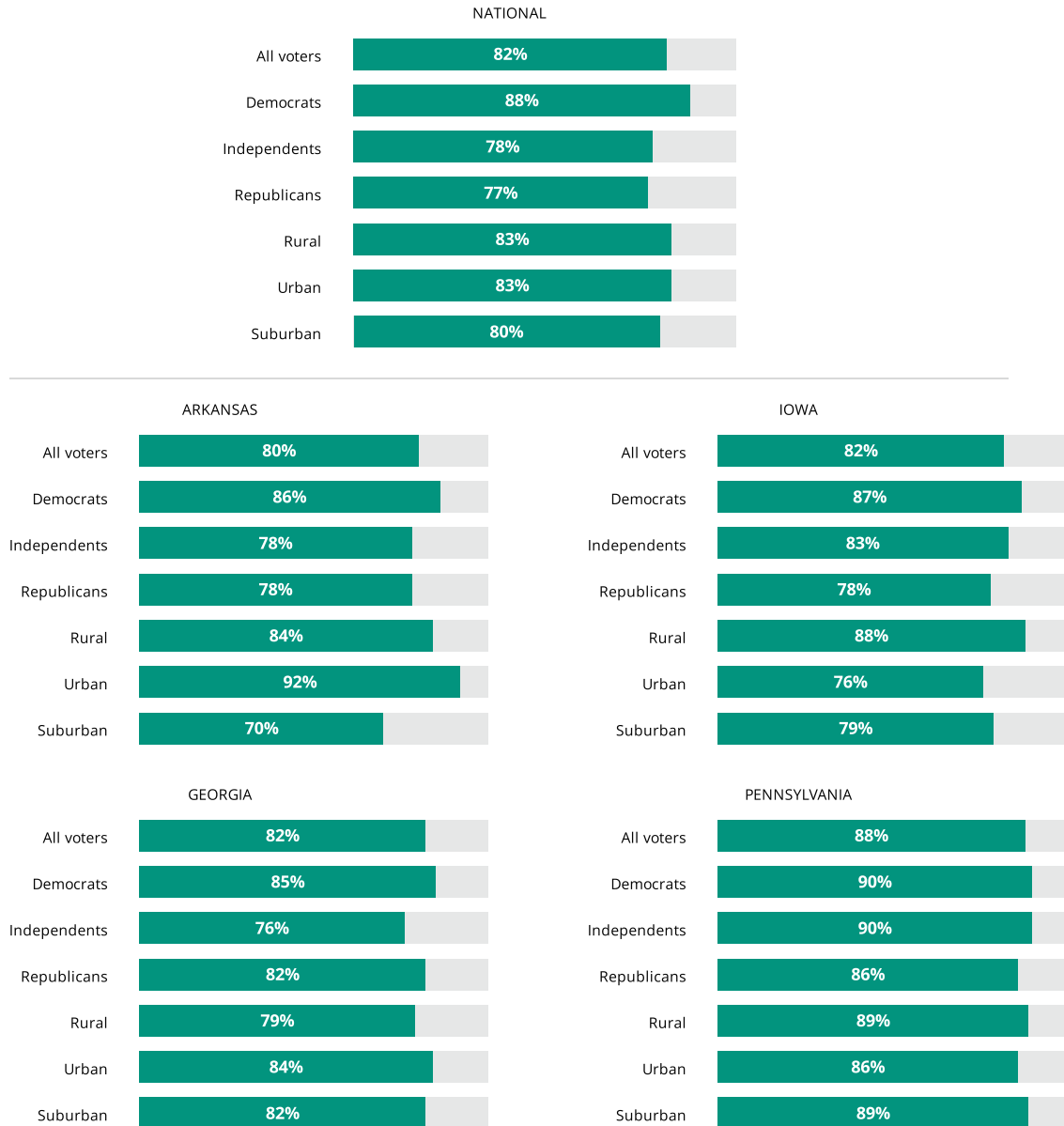
Farm Bill Reauthorization and Sustainable Agriculture Practices

The Farm Bill is the primary federal law for the American food and agriculture system. Nutrition programs like SNAP, also called “food stamps,” make up most of the funding, but programs that support the US agriculture industry, including crop insurance subsidies and conservation cost-share programs also are included.

Reauthorizing the Farm Bill Should be a Top Priority for Congress

At least four-in-five voters nationally and in the states tested say it is an important or top priority for Congress to reauthorize the U.S. Farm Bill.

Percentage of voters who say it is a priority for Congress to reauthorize the Farm Bill



Sustainable Farming Policy Proposals are Popular

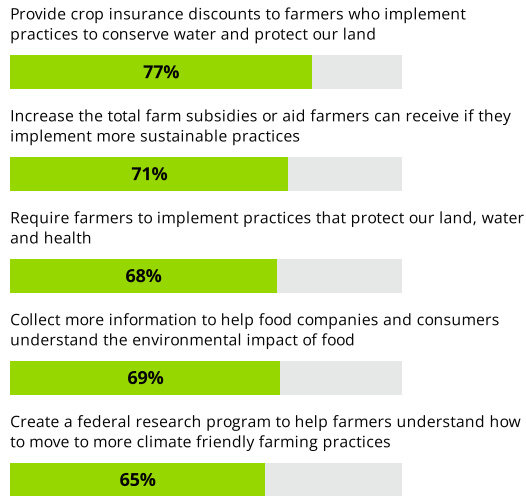
Proposals in the Farm Bill reauthorization that offer incentives, not punishments to farmers, are popular.

Percentage of voters who say it is a priority for Congress to reauthorize the Farm Bill

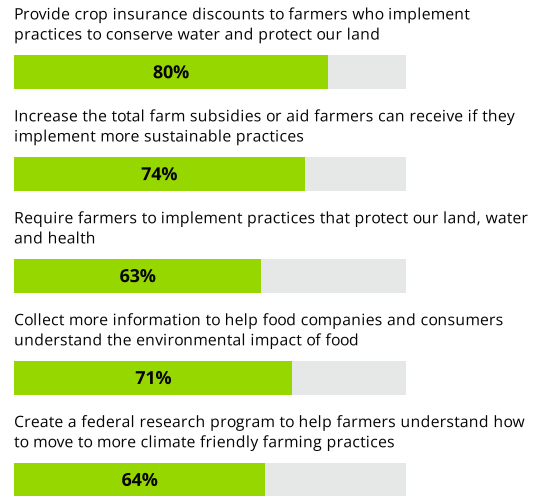
NATIONAL



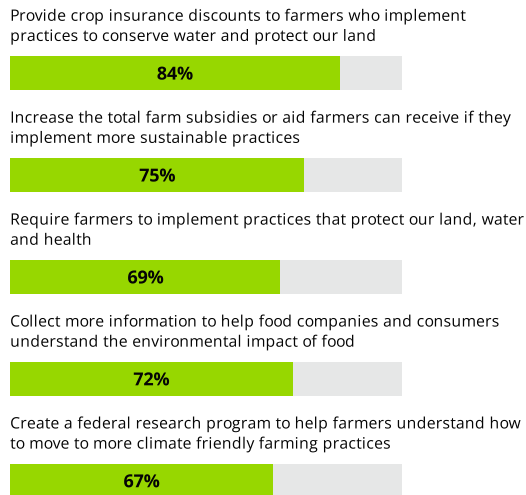
ARKANSAS



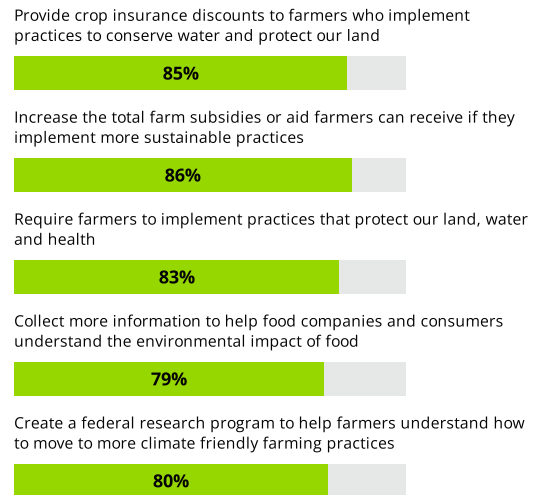
IOWA



GEORGIA



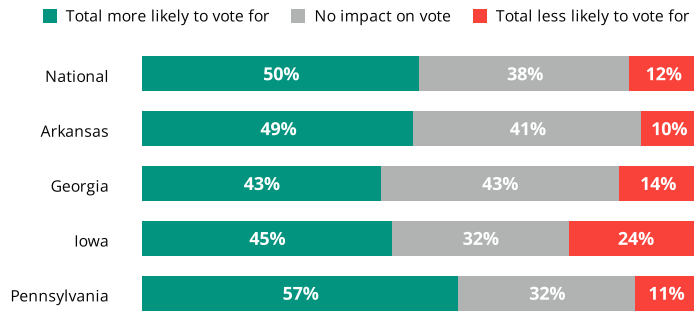
PENNSYLVANIA



Political Candidate Support for Farm Bill

Voters are more likely to vote for a candidate for political office in their state if they advocate for modernizing the Farm Bill to better help farmers address climate change.

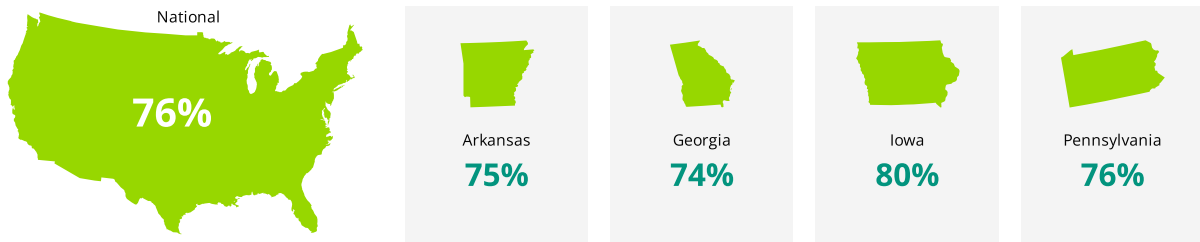
Percentage of voters who are more likely to vote for a candidate for political office who advocates for modernizing the Farm Bill to better help farmers address climate change



Voters Want the Federal Government to Encourage Farmers to Take Climate Friendly Actions

When asked to choose between the government encouraging or not encouraging farmers to use climate-friendly practices, most voters prefer the government to encourage the use of climate-friendly practices.

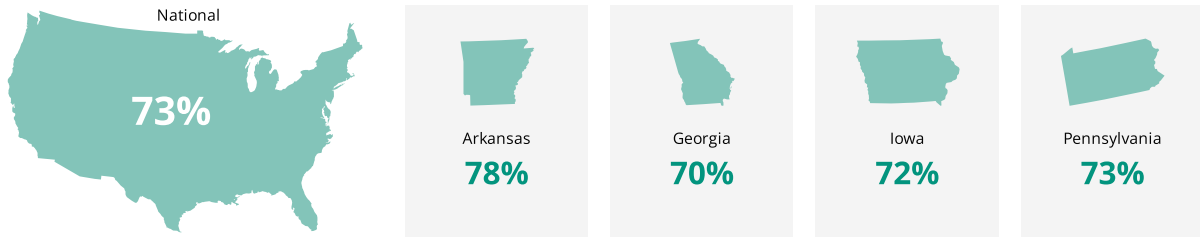
Percentage of voters who agree more that the government should encourage farmers to use climate-friendly practices



Today's Inflation and Rising Food Costs Shouldn't Stop the Agriculture Industry from Planning for the Future

When asked to choose between the agriculture industry producing food in a sustainable way that ensures America will be able to produce healthy food for the future, or producing enough food to feed the American population now while keeping costs down, a majority of voters favor preparing for a sustainable future.

Percentage of voters who agree more that the agriculture industry has a responsibility to produce food in a sustainable way that ensures America will be able to produce healthy food for future generations.



Voters Overwhelmingly View Sustainable Farming Practices as Important

Voters say it is very important to adopt sustainable farming practices to support clean water and reduce air pollution as well as update the agriculture system to encourage sustainable farming practices supportive of clean water and healthy productive soil.

Percentage of voters who say it is important...



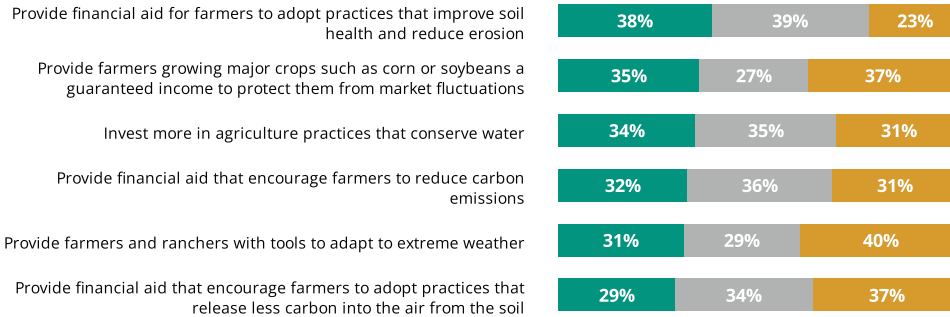
Funding Proposals that Move Farmers toward More Sustainable Farming Practices Should be a Top Priority for Lawmakers

Voters highly rank many funding proposals that would move farmers to more sustainable farming practices.

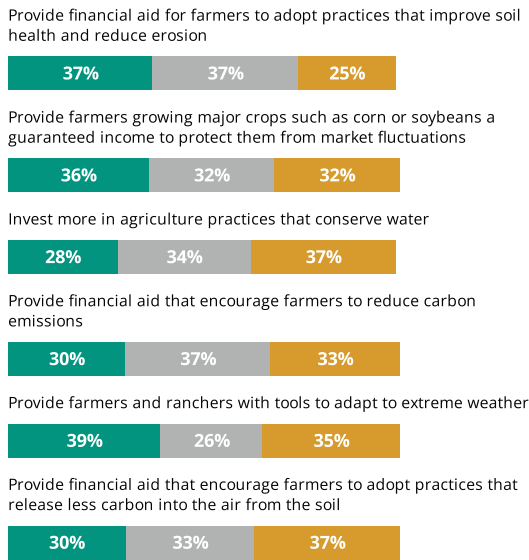
Percentage of voters who rank each proposal 1 or 2 (high priority for lawmakers) — or a 5 or 6 (low priority for lawmakers)

■ High priority for lawmakers (Rank 1, 2) ■ Medium priority for lawmakers (Rank 3, 4)
 ■ Low priority for lawmakers (Rank 5, 6)

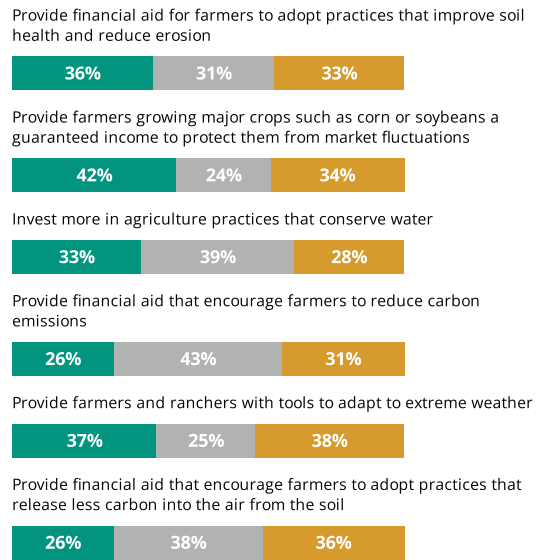
NATIONAL



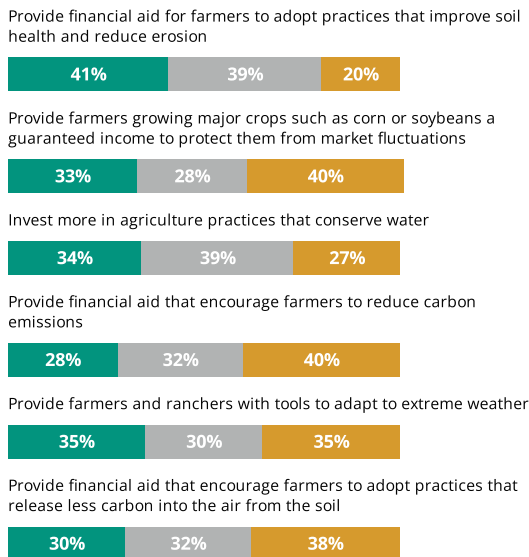
ARKANSAS



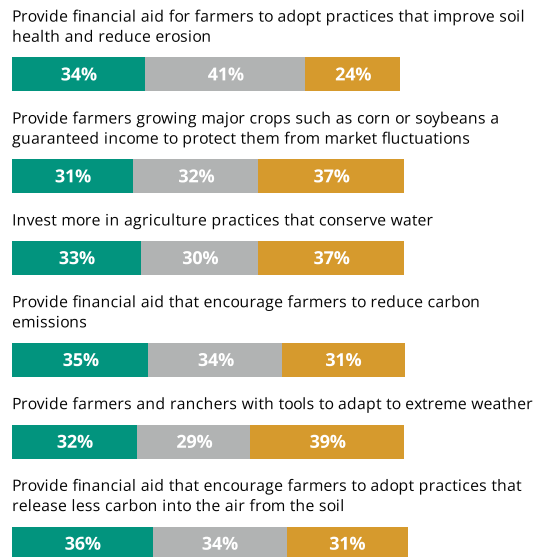
IOWA



GEORGIA



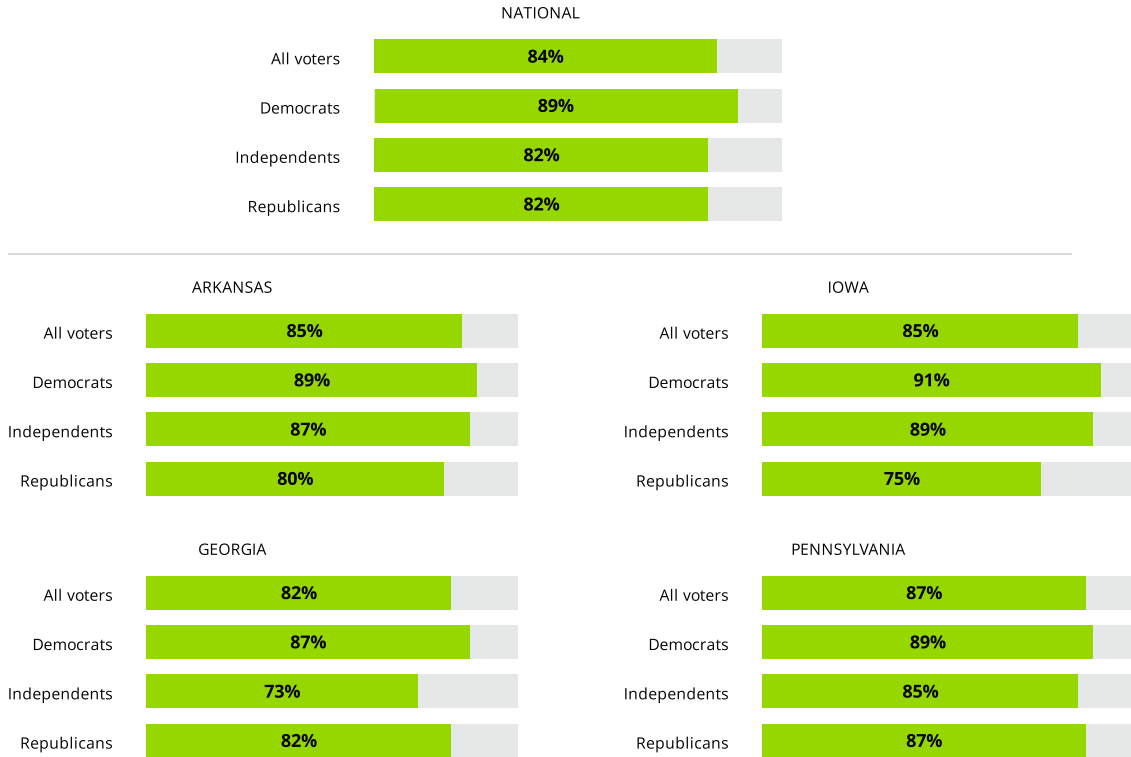
PENNSYLVANIA



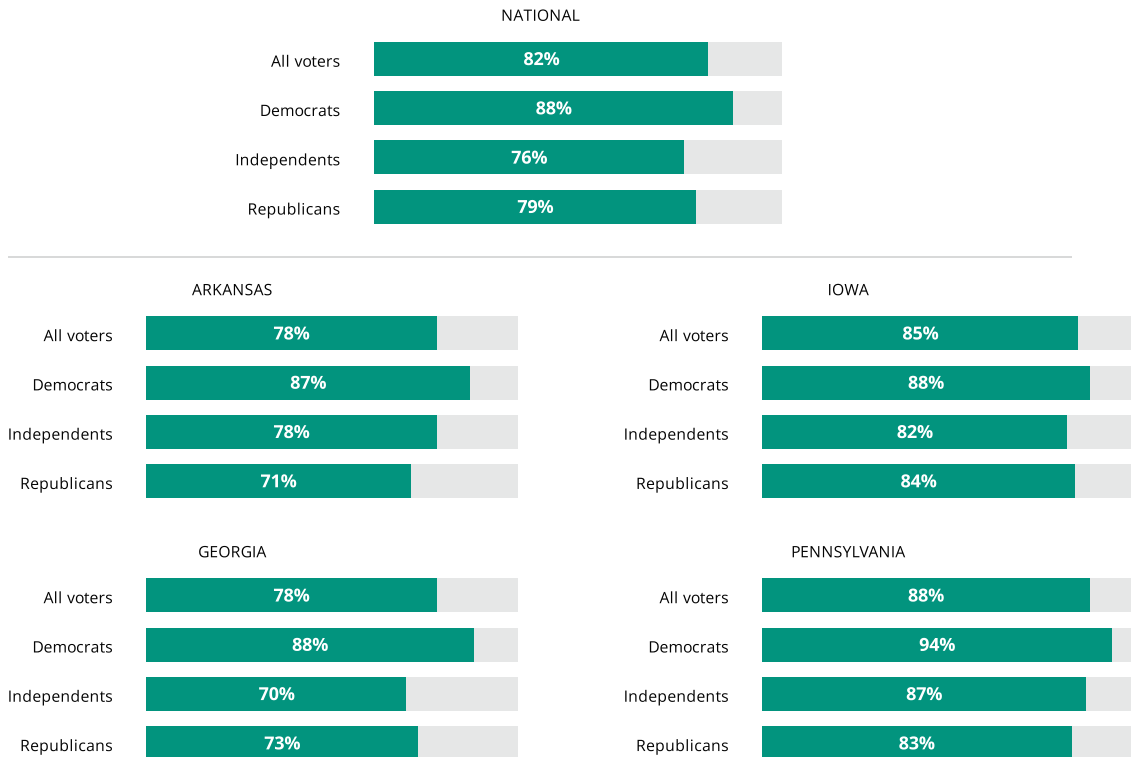
Voters are Thinking about Future Generations

Voters agree that we need to do more to protect future generations and we need to act now to conserve our soil and water resources.

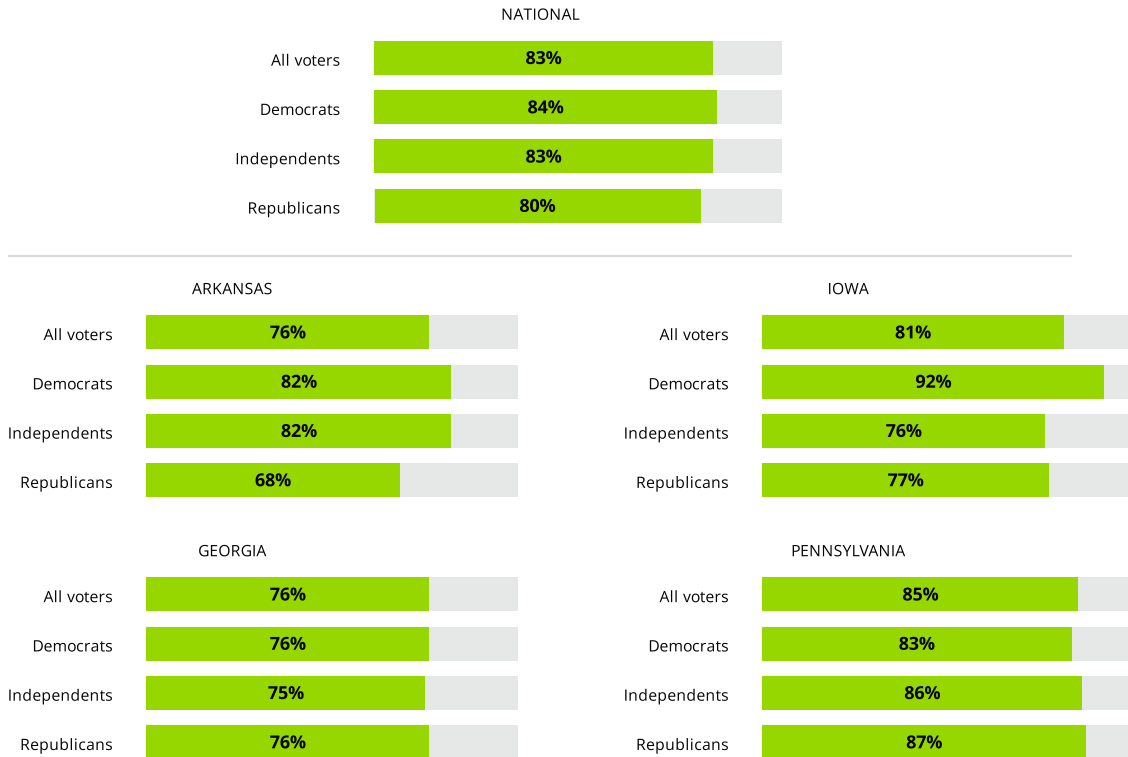
Percentage of voters who agree that we need to do more to maintain soil health and water quality so we can feed future generations



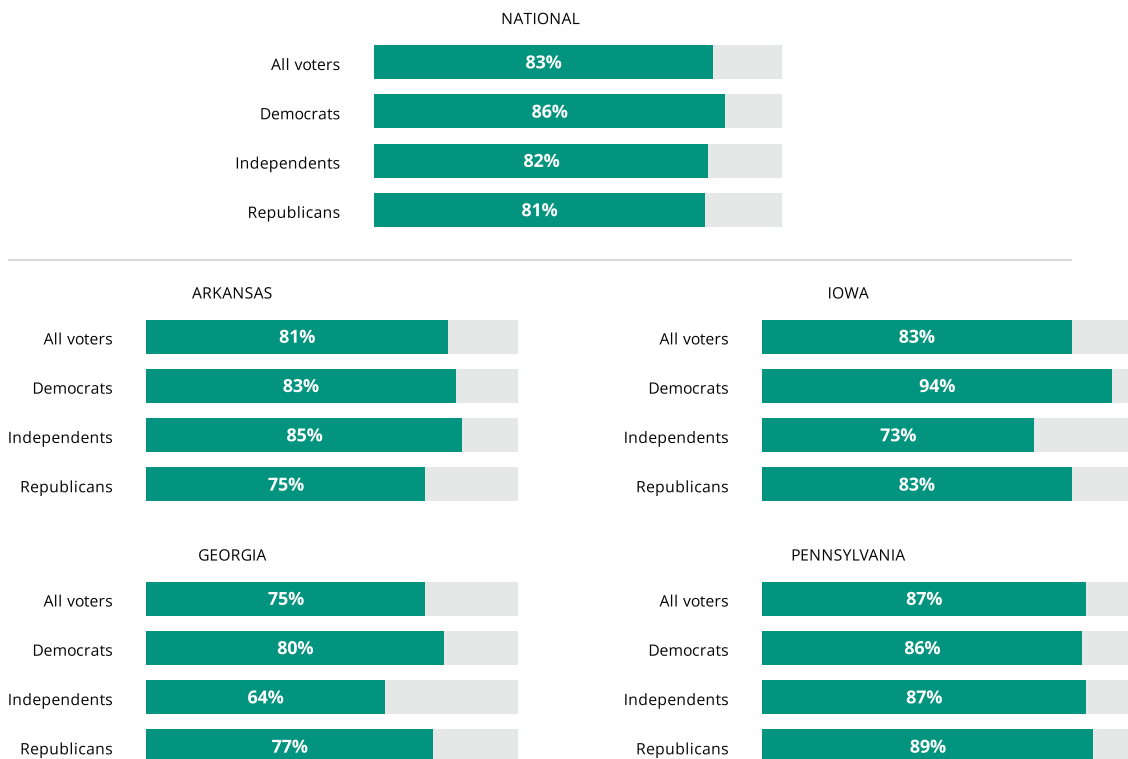
Percentage of voters who agree that we need to act now to conserve our soil and water resources



Percentage of voters who agree that water issues impact the cost of food across the country



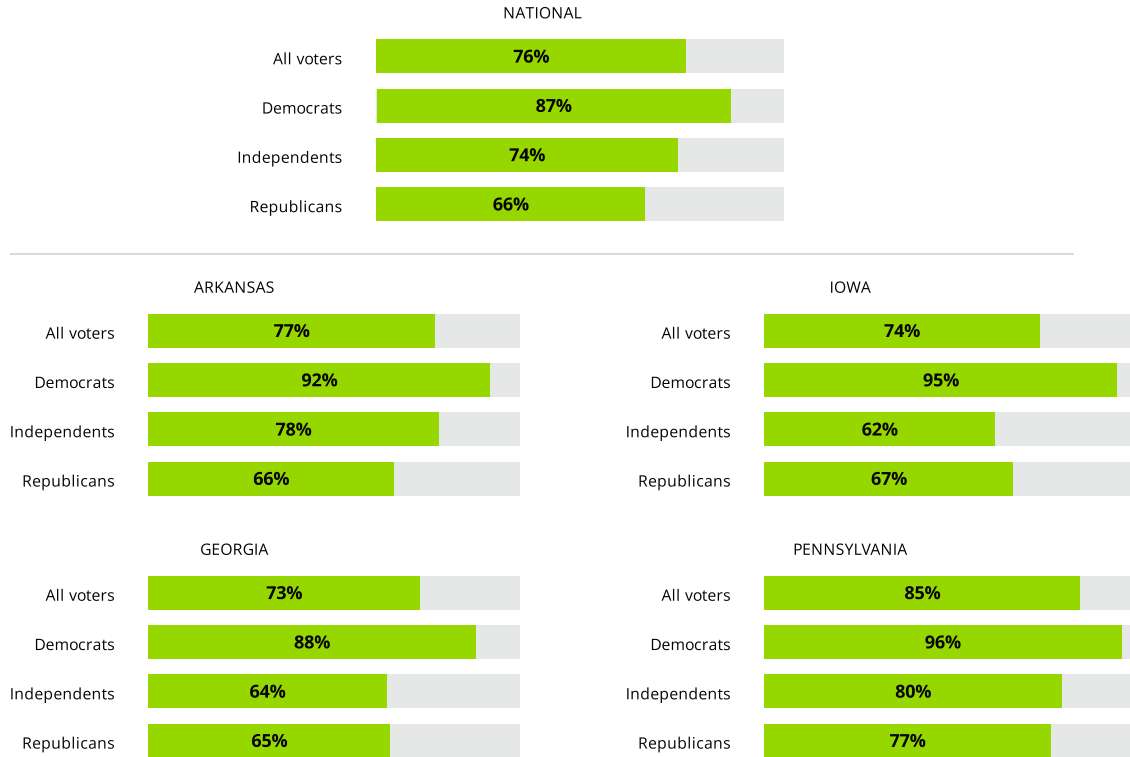
Percentage of voters who agree that farmers have a responsibility to reduce harmful pollutants from reaching U.S. rivers, lakes, and oceans



Voters Want Bipartisan Action on Climate Change

Voters want political parties to find compromise on climate change.

Percentage of voters who agree that political parties should find more common ground on environmental and climate change problems



The Walkon Family Foundation is, at its core, a family-led foundation. Three generations of the descendants of our founders, Sam and Helen Walton, and their spouses, work together to lead the foundation and create access to opportunity for people and communities. We work in three areas: improving K-12 education, protecting rivers and oceans and the communities they support, and investing in our home region of Northwest Arkansas and the Arkansas-Mississippi Delta.

Polling Methodology: This poll was conducted between July 6–July 7, 2022 among a sample of 1,988 registered voters. The interviews were conducted online and the data was weighted to approximate a target sample of registered voters based on gender by age, educational attainment, race, marital status, home ownership, race by educational attainment, 2020 presidential vote, and region. Results from the full survey have a margin of error of plus or minus 2 percentage points. The state level polls were conducted between July 6–July 12, 2022, among a sample of 249 registered voters in Arkansas, 298 Registered voters in Georgia, 200 registered voters in Iowa, and 297 registered voters in Pennsylvania. The interviews were conducted online, and the data was weighted to approximate a target sample of registered voters based on gender by age, educational attainment, race, marital status, home ownership, and 2020 presidential vote. Results from the full survey have a margin of error of plus or minus 6 percentage points in Arkansas, Georgia, and Pennsylvania and 7 percentage points in Iowa.